

Assembling an Online Community of Practice to Create Technology Innovation for Early Intervention Systems

Jon Hays • ITEC 800

Final Project

Assembling an Online Community of Practice to Create Technology Innovation for Early Intervention Systems

Subject Matter

- Early Intervention Systems & Child Find
- Technology Innovation (getSET Project)

Learning Theory

- Situated Learning
- Communities of Practice

Application

- Online Learning Community (Moodle)

Early Intervention Systems

- Early Intervention (E.I.) is a system of services for children under age three who are eligible for special education, and their families.

Child Find

- Child Find is the process of identifying children who may have disabilities and ensuring that they receive appropriate services.

Technology Innovation



Systematic Early Tracking for
Effective Referral and Reporting

Alise Paillard, Ph.D.
San Francisco State University

Michael Rebar, Ph.D.
Eastern Washington University

Jonathan Hays
SALUT Consulting

OSEP: Technology and Media Services for Individuals with Disabilities
Steppingstones of Technology Innovation - (CFDA 84.327A)



U.S. Office of Special
Education Programs

getSET Project & Framework

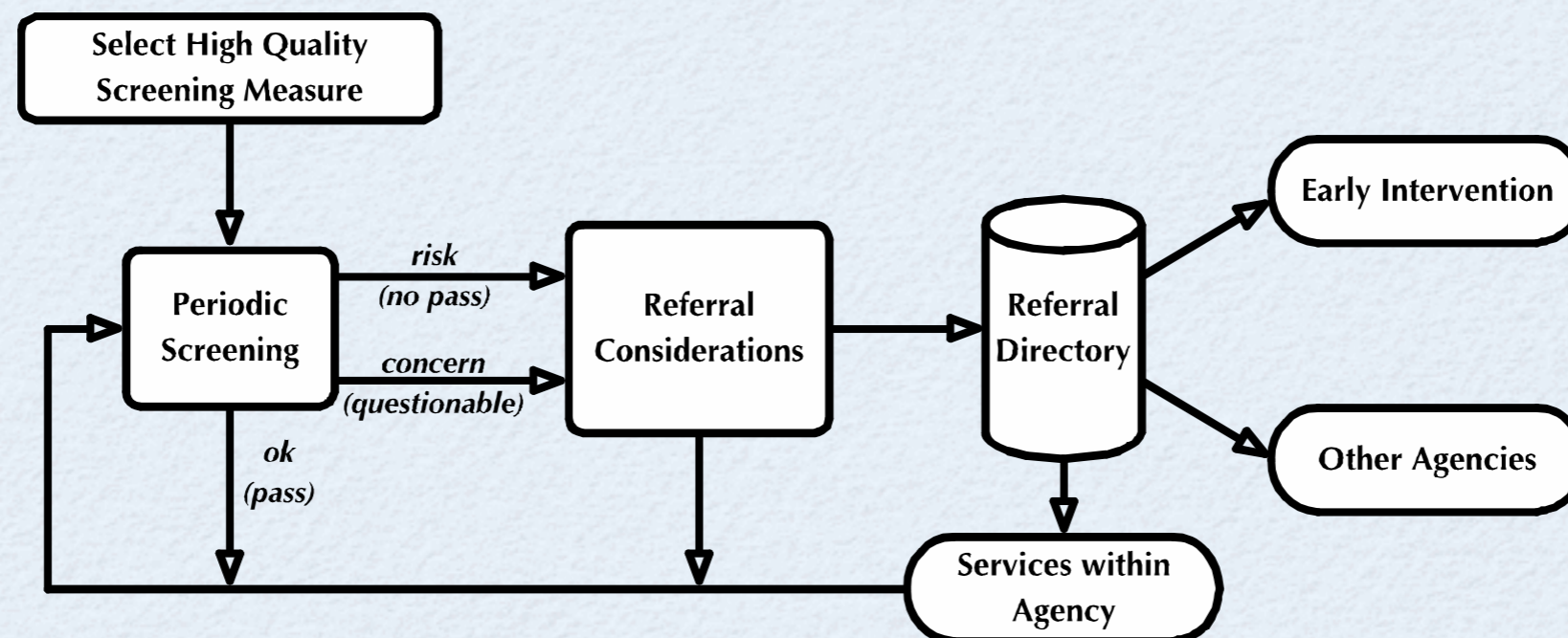
Purpose: to guide Early Intervention Systems on the path to coordinated, comprehensive Child Find practices.

What is the getSET software designed to do?

- facilitate the use of family-centered practices
- preserve agency knowledge to promote systems change
- account for efforts aimed at improving child outcomes

How will getSET help Child Find efforts?

- track developmental screening outcomes and referral decisions
- coordinate referral information with local early intervention programs
- report longitudinal Child Find efforts for individual children, programs, and early intervention systems



Situated Learning

“It is not so much that learners acquire structures or models to understand the world, but that they participate in frameworks that have a social structure. Learning involves participation in a community of practice” -
(Lave & Wenger, 1991)

Community of Practice

“Communities of practice are groups of people who share a concern, a set of problems, or a passion about a topic, and who deepen their knowledge and expertise in this area by interacting on an ongoing basis.” - (*Wenger, McDermott, & Snyder, 2002*)

Influencing Factors on CoPs

- Membership
- Commitment
- Relevance
- Enthusiasm
- Infrastructure
- Skills
- Resources

Challenges of CoPs

- Leadership
- Creating a Shared Vision
- Ability to be Flexible
- Using Variety of Knowledge for Decision-Making

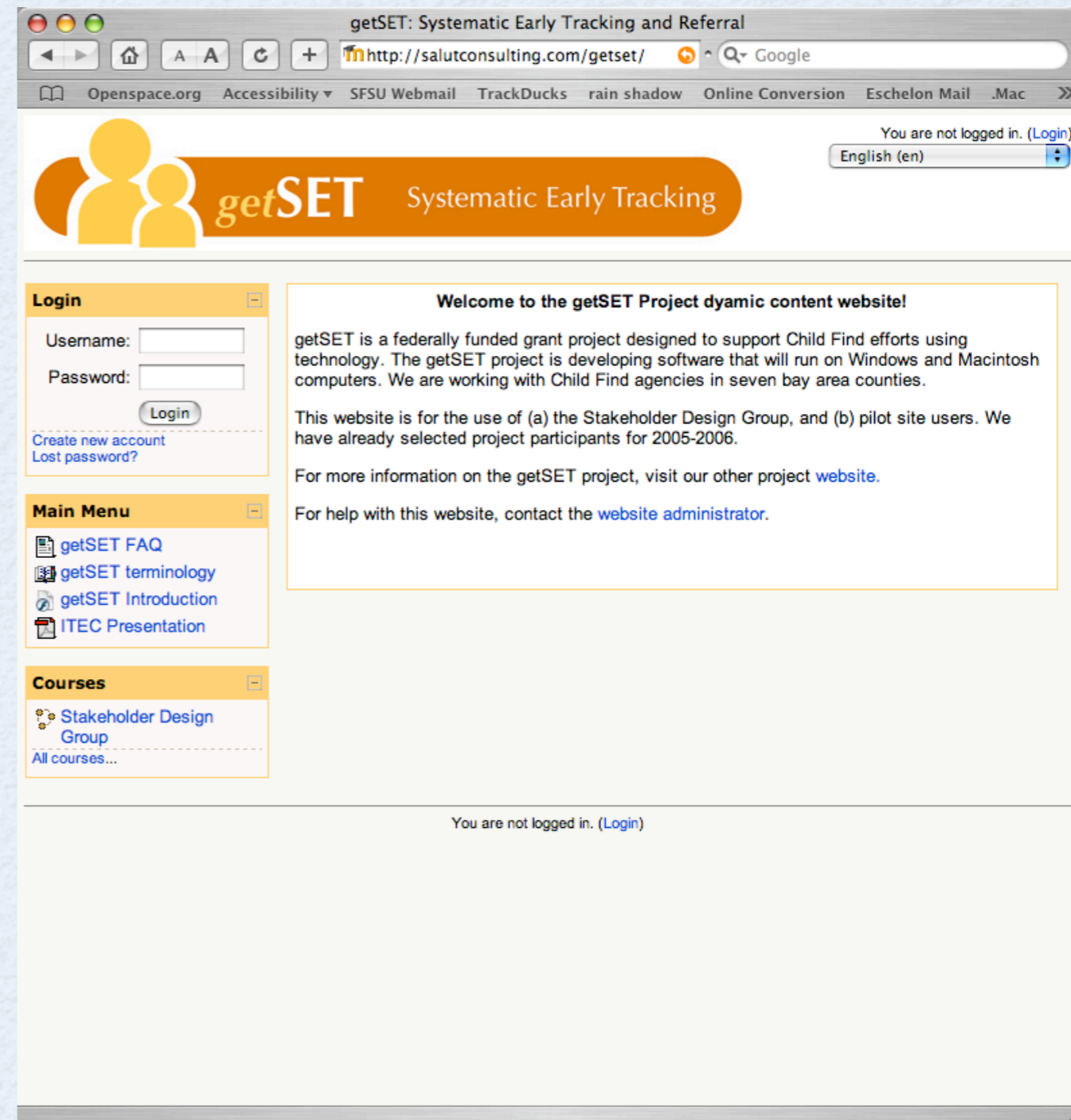
Moodle

- Modular Object-Oriented Dynamic Learning Environment
- Free, open source software designed to create online learning communities

The screenshot shows the Moodle website homepage in a browser window. The browser title is "Moodle - A Free, Open Source Course Management System for Online Learning" and the address bar shows "http://moodle.org/". The page features a yellow header with the Moodle logo and a navigation menu. The main content area is divided into several sections: "Main Menu" with links like "Free Support", "Downloads", and "Frequently Asked Questions"; "Welcome to Moodle!" with a description of the system and a graduation cap icon; "Latest News" with recent updates; "Moodle Community" with a group photo and statistics; "Moodle Development" with a wood slice image; "Search" and "Login" forms; "Course categories" with a list of discussion groups; and a "remote-Learner.net" advertisement.

getSET Moodle

- Online environment for Stakeholder Design Group to collaborate
- Provides resources for SDG and I.E. communities of practice



The screenshot shows a web browser window displaying the getSET Moodle website. The browser's address bar shows the URL <http://salutconsulting.com/getset/>. The website header features the getSET logo (two stylized figures) and the text "getSET Systematic Early Tracking". A language selection dropdown is set to "English (en)".

The main content area is divided into three columns:

- Login:** Includes fields for "Username:" and "Password:", a "Login" button, and links for "Create new account" and "Lost password?".
- Main Menu:** Lists resources: "getSET FAQ", "getSET terminology", "getSET Introduction", and "ITEC Presentation".
- Courses:** Lists "Stakeholder Design Group" and a link for "All courses...".

A central message box contains the following text:

Welcome to the getSET Project dynamic content website!

getSET is a federally funded grant project designed to support Child Find efforts using technology. The getSET project is developing software that will run on Windows and Macintosh computers. We are working with Child Find agencies in seven bay area counties.

This website is for the use of (a) the Stakeholder Design Group, and (b) pilot site users. We have already selected project participants for 2005-2006.

For more information on the getSET project, visit our other project [website](#).

For help with this website, contact the [website administrator](#).

At the bottom of the page, a footer message states: "You are not logged in. (Login)"